



Government of India
Ministry of Earth Sciences



India Meteorological Department

PRESS RELEASE-1

Time of issue: 1630 hours IST

Dated: 21st December, 2024

Sub: Depression over Westcentral Bay of Bengal off Andhra Pradesh coast

Under the influence of an upper air cyclonic circulation over south Andaman Sea and adjoining southeast Bay of Bengal, a **low pressure area** formed over central parts of south Bay of Bengal in the morning (0830 IST) of 16th December, 2024. It lay as a **well marked low pressure area** over the southwest Bay of Bengal in the morning (0830 hours IST) of 18th December, 2024. It concentrated into a **depression** over westcentral Bay of Bengal off Andhra Pradesh coast in the evening (1730 hrs IST) of yesterday, the 20th December 2024.

Thereafter, it moved east-northeastwards and lay centred at 1130 hrs IST of 21st December 2024 over the westcentral Bay of Bengal about 430 km south-southeast of Visakhapatnam (Andhra Pradesh), 490 km east-northeast of Chennai (Tamil Nadu) and 580 km south of Gopalpur (Odisha).

The system is likely to move slowly east-northeastwards maintaining its intensity as a depression for next 6 hours and weaken gradually thereafter over the Sea.

Warnings:

(ii) Wind warning:

Squally wind speed reaching 45-55 kmph gusting to 65 kmph is likely to prevail over westcentral and adjoining central parts of South Bay of Bengal till morning of 23rd December. Squally wind speed reaching 35 to 45 kmph gusting to 55 kmph is likely to prevail along and off South Odisha-Andhra Pradesh-north Tamil Nadu coasts on 21st & 22nd December;

(iii) Sea Condition:

Rough to very rough sea conditions are very likely to prevail over westcentral and adjoining central parts of South Bay of Bengal till morning of 23rd December. Rough sea conditions are very likely along & off South Odisha-Andhra Pradesh coast-north Tamil Nadu coasts till on 21st & 22nd December.

(iv) Fishermen Warning:

Fishermen are advised not to venture into westcentral & adjoining central parts of South Bay of Bengal till morning of 23rd December and along & off south Odisha-Andhra Pradesh-north Tamil Nadu coasts till on 21st & 22nd December.

All associated graphics have been kept in Annexure-I. The 24 hours accumulated realised rainfall (≥ 7 cm) ending at 0830 hours IST of 21st December is kept in Annexure-II.

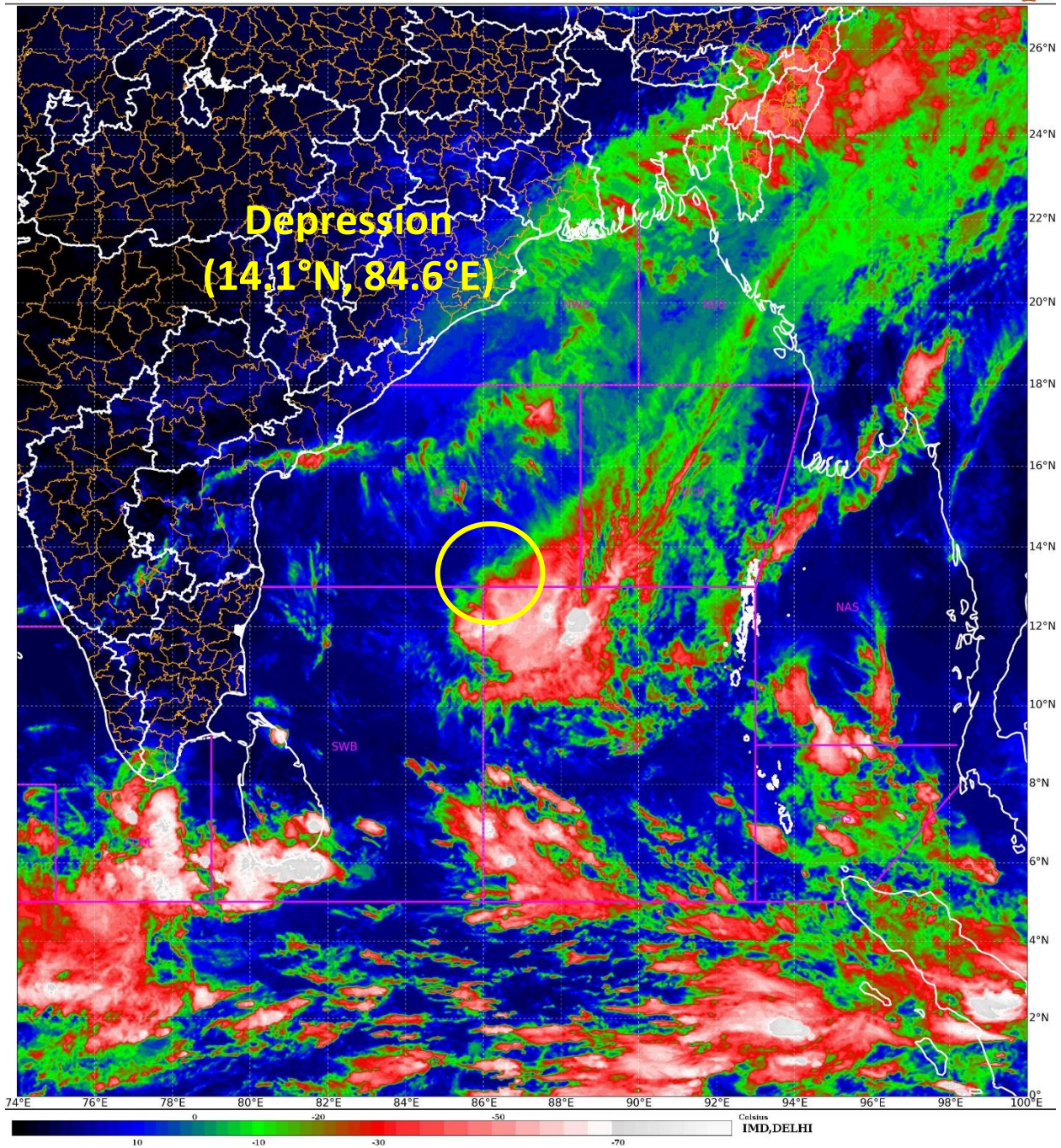
Next Press Release will be issued at 1430 hours IST of tomorrow, the 22nd December 2024.

Contact: Cyclone Warning Division, Office of the Director General of Meteorology, India Meteorological Department, Ministry of Earth Sciences, E-mail: cyclonewarningdivision@gmail.com, Website: rsmcnewdelhi.imd.gov.in, Spatial rainfall distribution: Isolated: <25%, A few: 26-50%, Many: 51-75%, Most: 76-100%, Rainfall amount (mm): Heavy rain: 64.5 – 115.5, Very heavy rain: 115.6 – 204.4, Extremely heavy rain: 204.5 or more.

Annexure-I

SAT : INSAT-3DR IMG
IMG_TIR1_TEMP 10.8 um
L1C Mercator

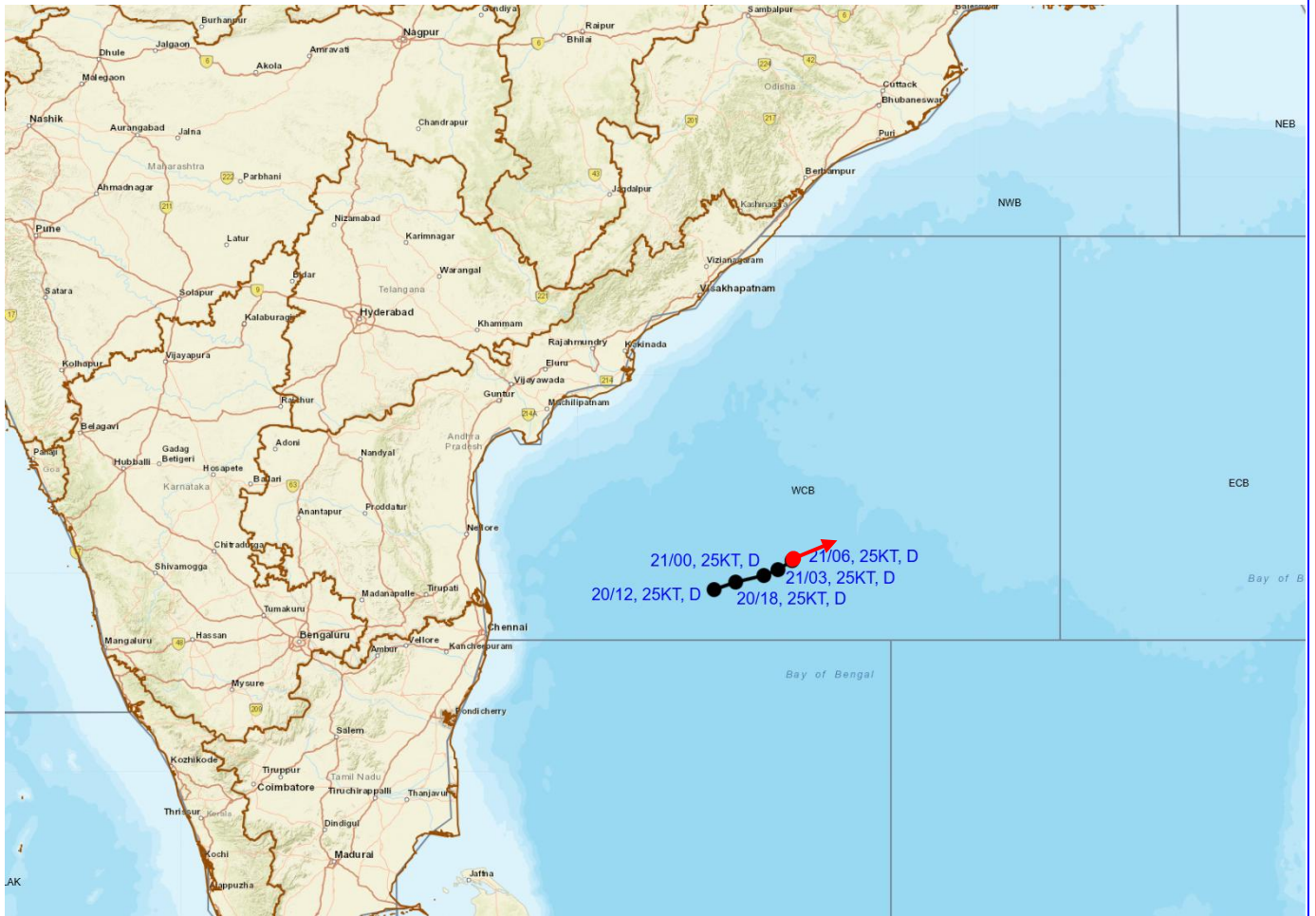
21-12-2024/(0845 to 0912) GMT
21-12-2024/(1415 to 1442) IST



Contact: Cyclone Warning Division, Office of the Director General of Meteorology, India Meteorological Department, Ministry of Earth Sciences, E-mail: cyclonewarningdivision@gmail.com, Website: rsmcnewdelhi.imd.gov.in, Spatial rainfall distribution: Isolated: <25%, A few: 26-50%, Many: 51-75%, Most: 76-100%, Rainfall amount (mm): Heavy rain: 64.5 – 115.5, Very heavy rain: 115.6 – 204.4, Extremely heavy rain: 204.5 or more.



OBSERVED AND FORECAST TRACK OF DEPRESSION OVER WESTCENTRAL BAY OF BENGAL ON 0600 UTC (1130 HRS. IST) OF 21st DECEMBER, 2024.

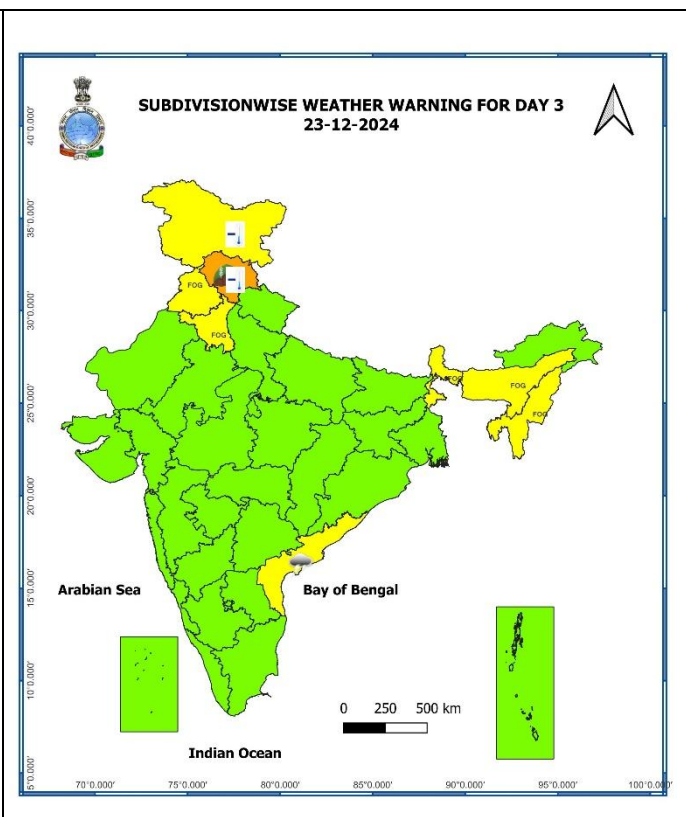
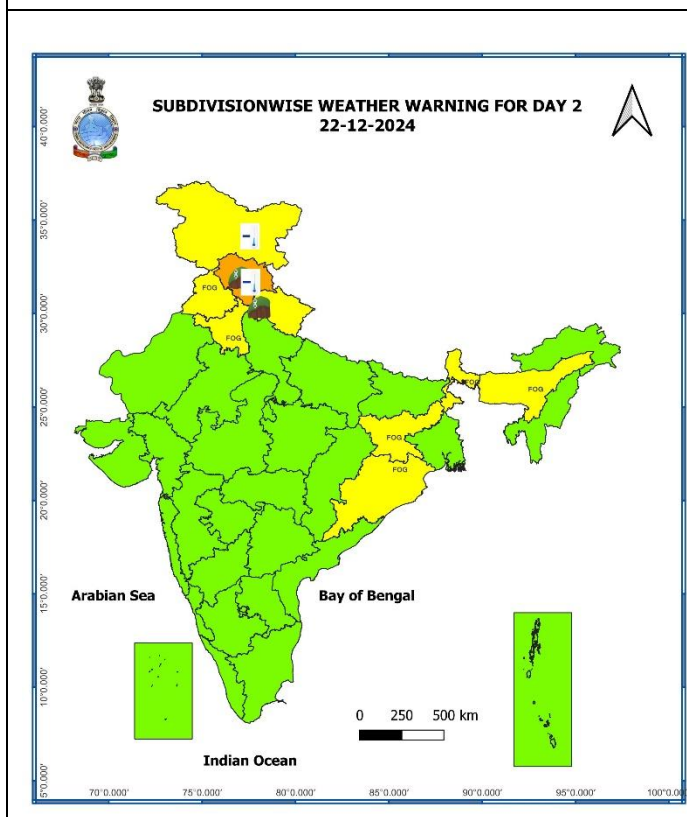
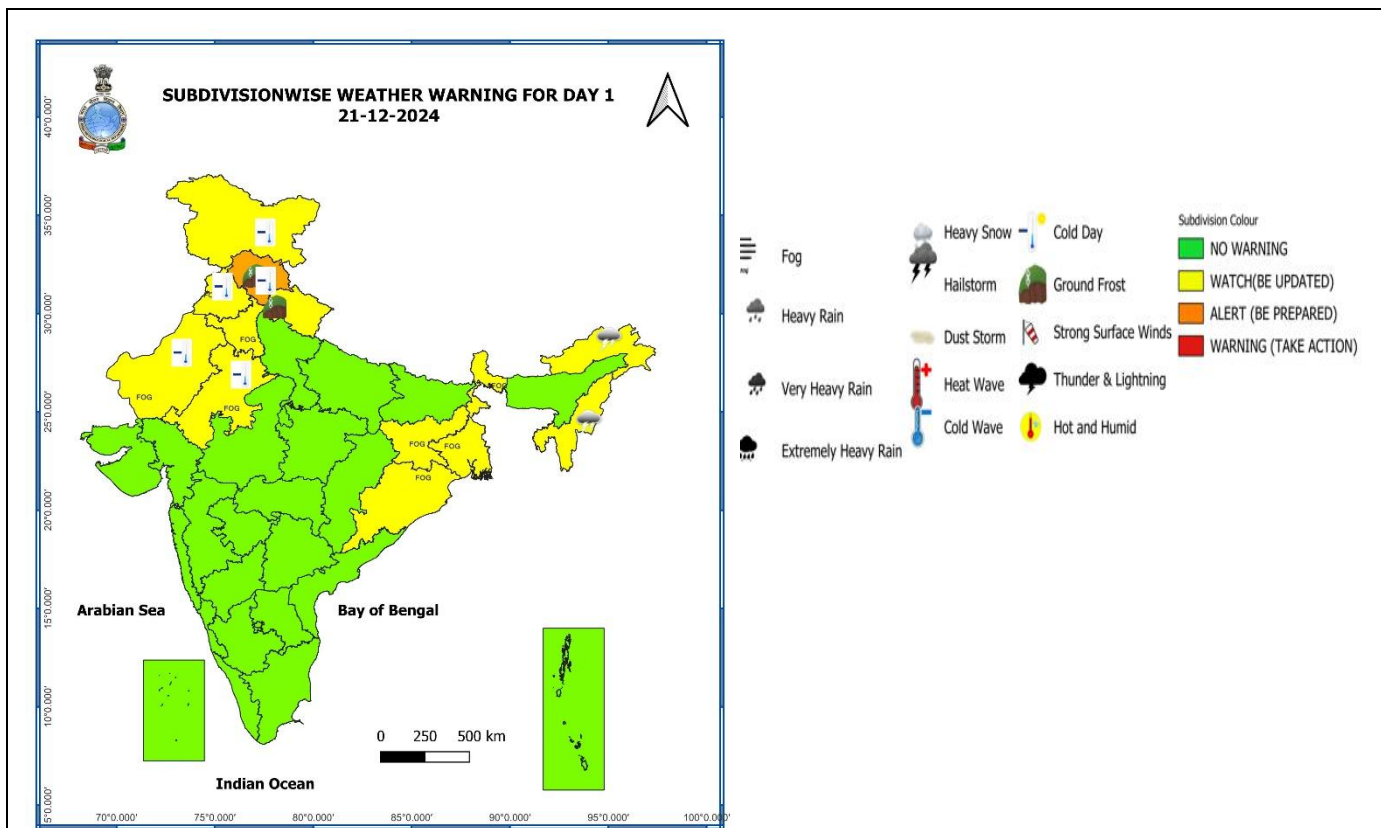


DATE/TIME : IN UTC
IST : UTC + 0530
KT : NAUTICAL MILES/HOUR = 1.85 KM/HOUR
LPA : LOW PRESSURE AREA
WML : WELL MARKED LOW PRESSURE AREA
D : DEPRESSION (17-27 KT)
DD : DEEP DEPRESSION (28-33 KT)
CS : CYCLONIC STORM (34-47 KT)
SCS : SEVERE CYCLONIC STORM (48-63 KT)
VSCS : VERY SEVERE CYCLONIC STORM (64-89 KT)
ESCS : EXTREMELY SEVERE CYCLONIC STORM (90-119 KT)
SuCS : SUPER CYCLONIC STORM (≥120 KT)

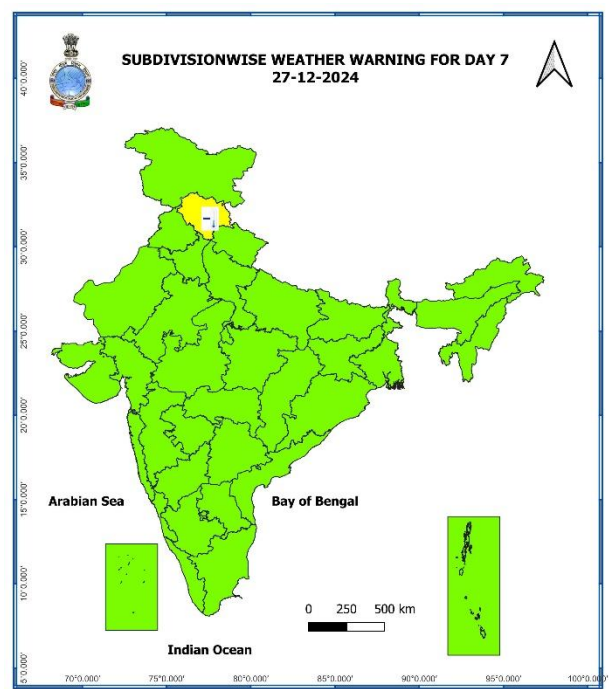
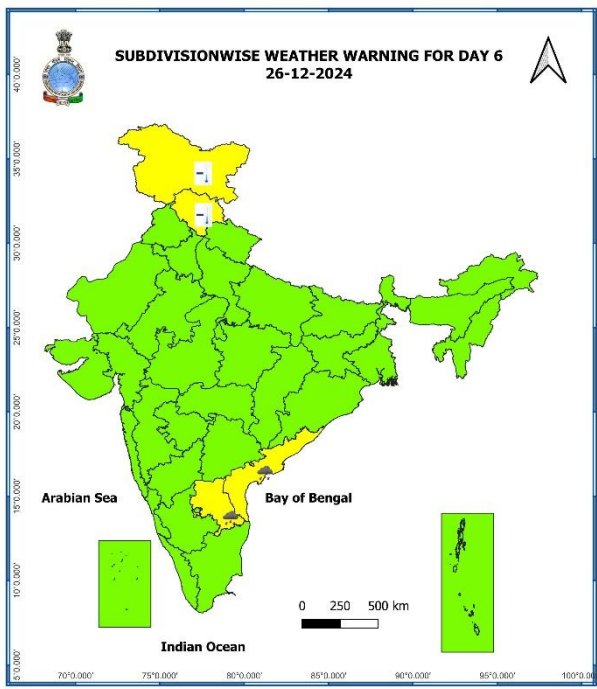
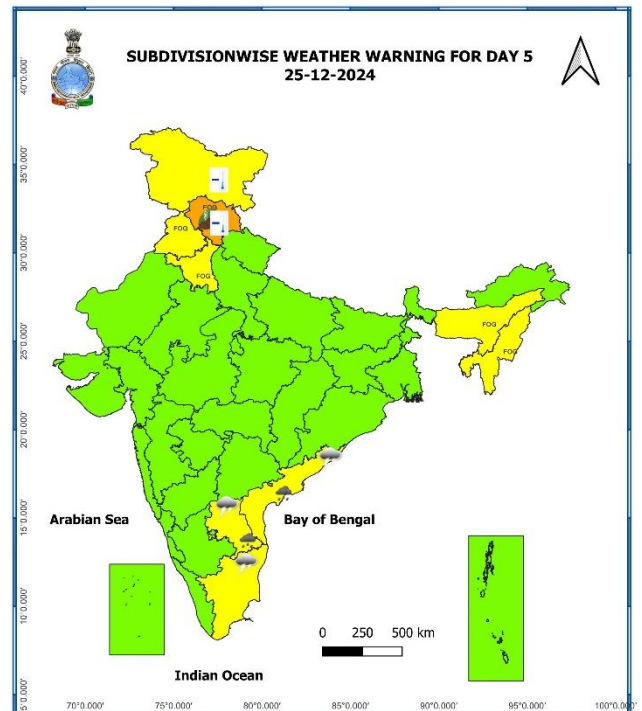
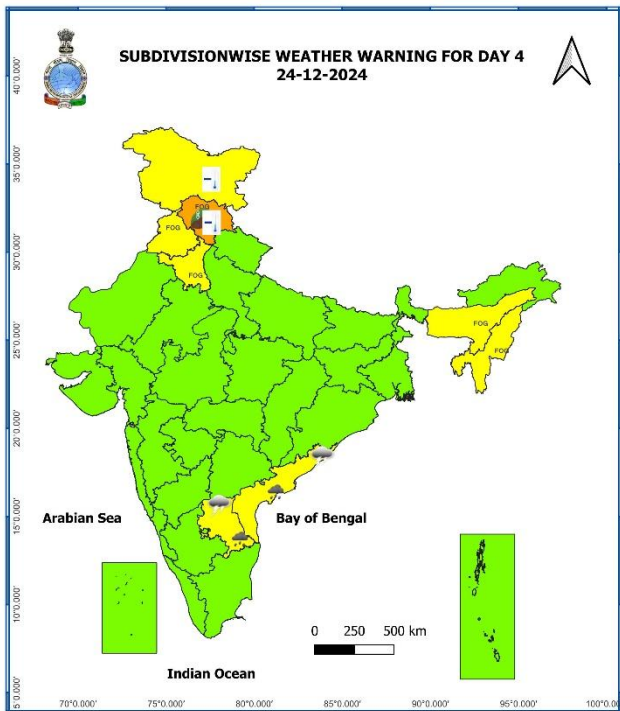
LESS THAN 34 KT
 34-47 KT
 ≥ 48 KT
 OBSERVED TRACK
 FORECAST TRACK
 CONE OF UNCERTAINTY

Weather Warning Graphics

Contact: Cyclone Warning Division, Office of the Director General of Meteorology, India Meteorological Department, Ministry of Earth Sciences, E-mail: cyclonewarningdivision@gmail.com, Website: rsmcnewdelhi.imd.gov.in, Spatial rainfall distribution: Isolated: <25%, A few: 26-50%, Many: 51-75%, Most: 76-100%, Rainfall amount (mm): Heavy rain: 64.5 – 115.5, Very heavy rain: 115.6 – 204.4, Extremely heavy rain: 204.5 or more.



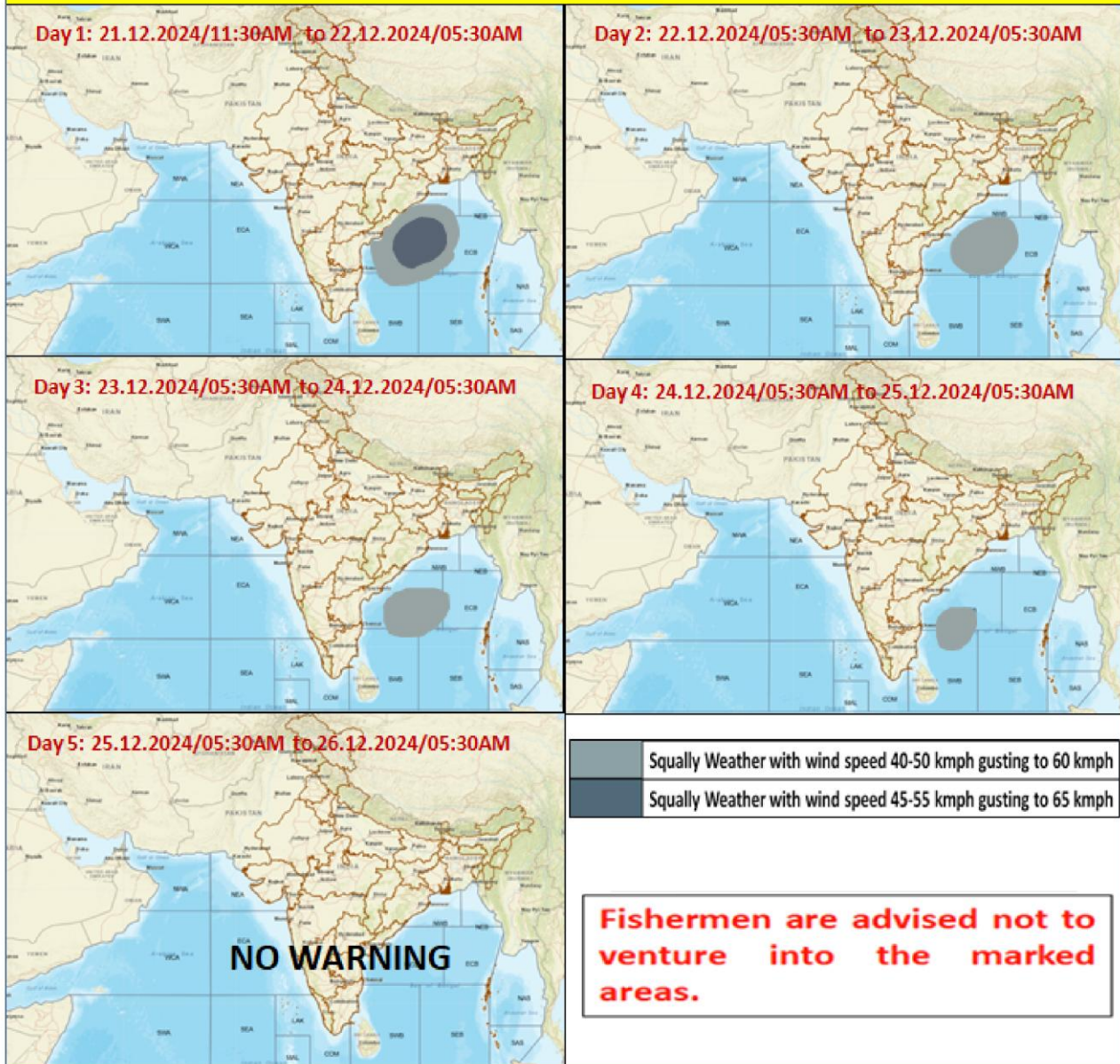
Contact: Cyclone Warning Division, Office of the Director General of Meteorology, India Meteorological Department, Ministry of Earth Sciences, E-mail: cyclonewarningdivision@gmail.com, Website: rsmcnewdelhi.imd.gov.in, Spatial rainfall distribution: Isolated: <25%, A few: 26-50%, Many: 51-75%, Most: 76-100%, Rainfall amount (mm): Heavy rain: 64.5 – 115.5, Very heavy rain: 115.6 – 204.4, Extremely heavy rain: 204.5 or more.



- Action may be taken based on **ORANGE AND RED** COLOUR warnings.
- Vulnerable regions likely urban and hilly areas action may be initiated for heavy rainfall warning.
- As the lead period increases forecast accuracy decreases

Contact: Cyclone Warning Division, Office of the Director General of Meteorology, India Meteorological Department, Ministry of Earth Sciences, E-mail: cyclonewarningdivision@gmail.com, Website: rsmcnewdelhi.imd.gov.in, Spatial rainfall distribution: Isolated: <25%, A few: 26-50%, Many: 51-75%, Most: 76-100%, Rainfall amount (mm): Heavy rain: 64.5 – 115.5, Very heavy rain: 115.6 – 204.4, Extremely heavy rain: 204.5 or more.

Fishermen Warning Graphics



Contact: Cyclone Warning Division, Office of the Director General of Meteorology, India Meteorological Department, Ministry of Earth Sciences, E-mail: cyclonewarningdivision@gmail.com, Website: rsmcnewdelhi.imd.gov.in, Spatial rainfall distribution: Isolated: <25%, A few: 26-50%, Many: 51-75%, Most: 76-100%, Rainfall amount (mm): Heavy rain: 64.5 – 115.5, Very heavy rain: 115.6 – 204.4, Extremely heavy rain: 204.5 or more.

Significant Rainfall recorded during past 24 hours till 0830 hours IST of today 21.12.2024 (in cm):

- ❖ Tamil Nadu, Puducherry & Karaikal: Sandhiyur KVK AWS (dist Salem) 8, Kodumudiyaru Dam (dist Tirunelveli), Balamore (dist Kanyakumari), Oothu (dist Tirunelveli), Nandhiyar Head (dist Thiruchirappalli) 7 each,
- ❖ Coastal Andhra Pradesh & Yanam: Bondapalle (dist Vizianagaram) 9, Merakamudidam (dist Vizianagaram) 8, Bobbili (dist Vizianagaram) 8, Therlam (dist Vizianagaram) 8, Mentada (dist Vizianagaram) 8, Bheemunipatnam (dist ishakhapatnam) 8, Nellimarla (dist Vizianagaram) 7, Garividi (dist Vizianagaram) 7, Cheepurupalle (dist Vizianagaram) 7, Gajapathinagaram (dist Vizianagaram) 7,
- ❖ Odisha: Ranpur (dist Nayagarh) 11, Begunia (dist Khurda) 8, Berhampur (dist Ganjam) 8, Jatni (dist Khurda) 7, Khordha Pto (dist Khurda) 7, Pipili (dist Puri) 7, Naugaon (dist Jagatsinghpur) 7, Banpur (dist Khurda) 7, Belaguntha (dist Ganjam) 7, Krishnaprasad (dist Puri) 7, Gop (dist Puri) 7, Purushottampur (dist Ganjam) 7,